

# *Indoor Plants*

Prepared by:  
Etobicoke Master Gardeners



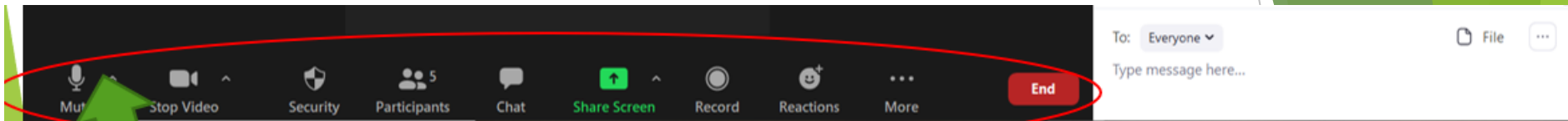
Etobicoke Master Gardeners  
[www.etobickemastergardeners.ca](http://www.etobickemastergardeners.ca)

Presented with:  
Humber Arboretum

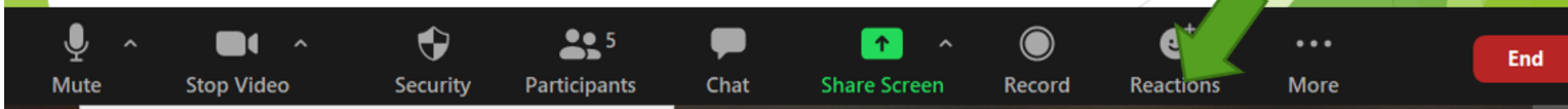


Humber Arboretum  
[humber.ca/arboretum](http://humber.ca/arboretum)

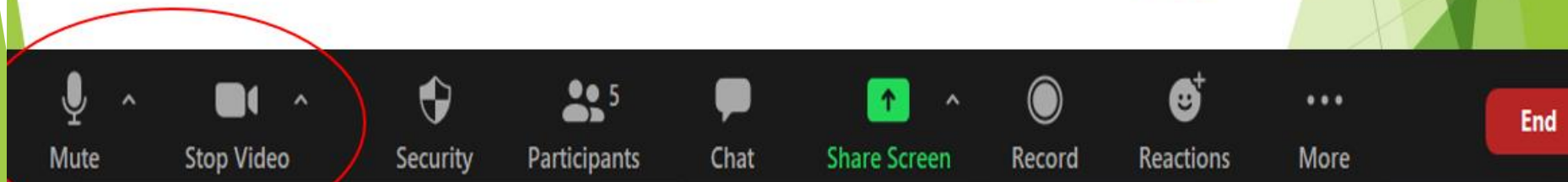
# Welcome to Virtual Tips & Tricks

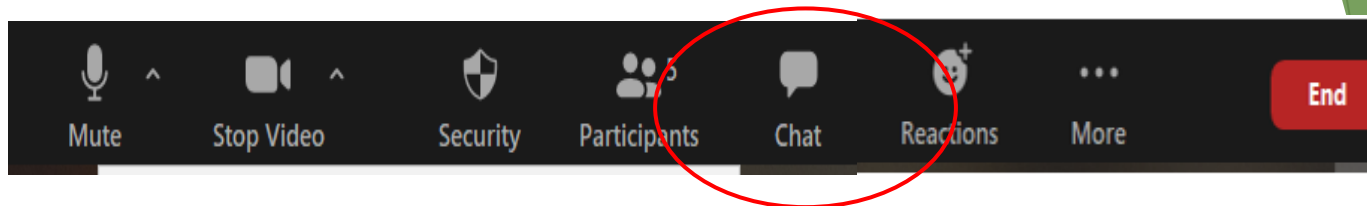


“Mouse over” the screen area to wake up the functions.



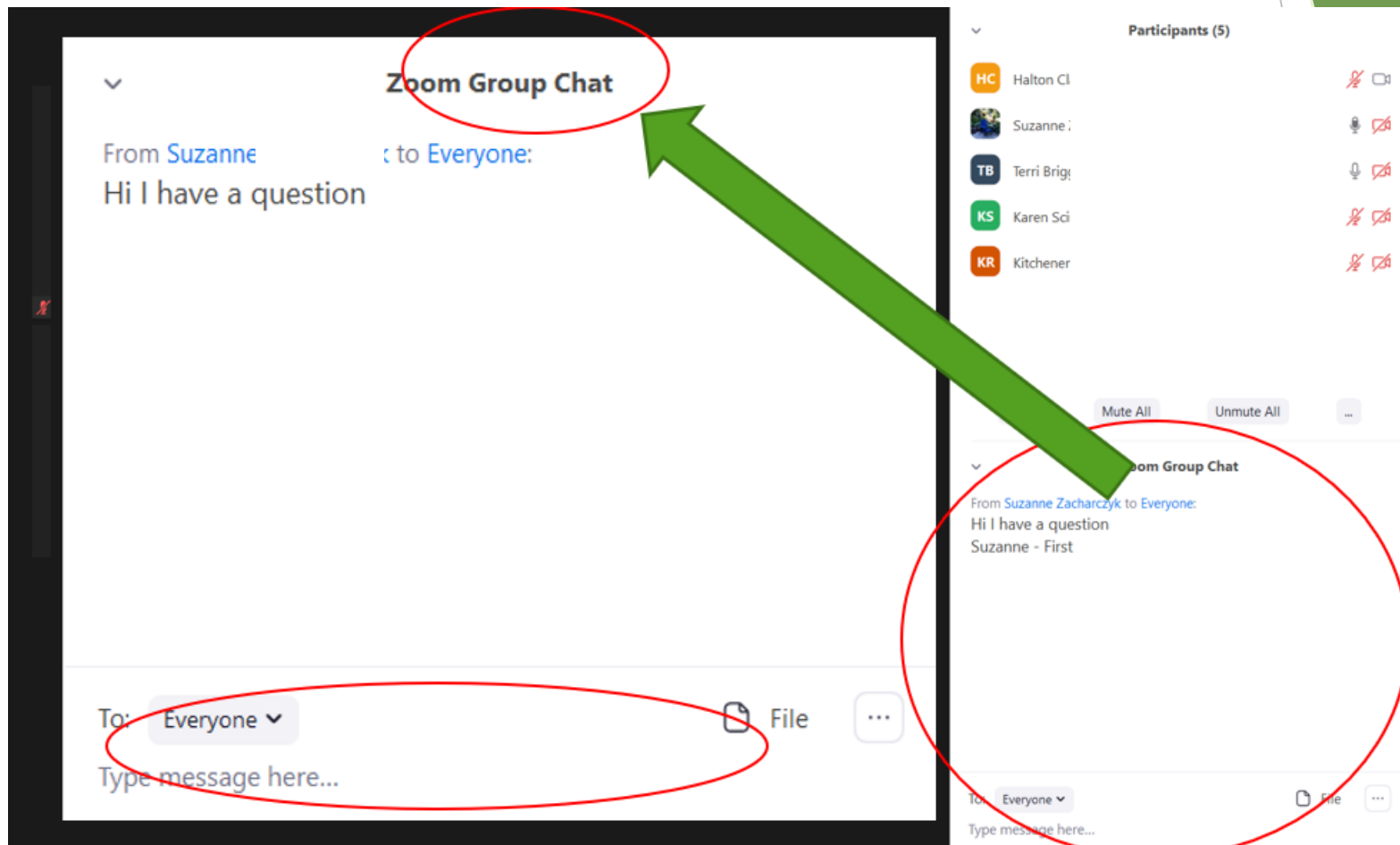
**KR** Kitchener Rhonda Grein





## How to ask a question:

- ✓ Click on “Chat” in the functions
- ✓ Type in your question. A moderator will read it.



# Master Gardeners of Ontario



Etobicoke Master Gardeners

[ABOUT US](#)

[CONTACT US](#)

[CALENDAR OF EVENTS](#)

[COMMUNITY ACTIVITIES](#)

## Etobicoke Master Gardeners

**Etobicoke Master Gardeners (EMG)** was formed in January 2005 and is meant to cover the west side of Toronto and take in those people who want to study for the Master Gardener (MG) designation.

Meetings are held at the [Montgomery Inn](#) on the fourth Wednesday of most months from 7 to 10 p.m.

EMG comprises 36 active members: 26 Master Gardeners (MG) and 10 Master Gardeners in Training (MGIT) who are in the process of studying for Master Gardener Certification. We welcome inquiries from enthusiastic and interested individuals wishing to learn more about joining our







The Humber Arboretum consists of nearly 250 acres of public gardens and natural areas located in the Humber River watershed in North Etobicoke. Connected to Humber College North Campus, it exists as a unique tri-partnership between Humber College, the City of Toronto, and the Toronto and Region Conservation Authority (TRCA). The Humber Arboretum is free to visit and offers a variety of programming to both Humber College students and the public.



# LAND ACKNOWLEDGEMENT

Humber Arboretum and Humber College are located within the traditional and treaty lands of the Mississaugas of the Credit.

Known as Adoobiigok [A-doe-bee-goke], the “Place of the Alders” in Michi Saagiig [Mi-Chee Saw-Geeg] language, the region is uniquely situated along the Humber River Watershed, which historically provided an integral connection for Anishinaabe [Ah-nish-nah-bay], Haudenosaunee [Hoeden-no-shownee], and Wendat [Wine-Dot] peoples between the Ontario Lakeshore and the Lake Simcoe/Georgian Bay regions.

Now home to people of numerous nations, Adoobiigok continues to provide a vital source of interconnection for all.

# Agenda

- ✓ Introduction
- ✓ Esthetics of Indoor Plants
- ✓ Growing conditions and indoor plant care
- ✓ How to Choose the Right Plant
- ✓ Challenges of Indoor Gardening
- ✓ Increasing your stock
- ✓ Indoor Plants
- ✓ Wrap Up

The background of the slide features abstract, overlapping green geometric shapes, primarily triangles and polygons, in various shades of green, creating a modern and dynamic look.

Poll Question:

Have you attempted to  
grow indoor plants?



# Why grow plants indoors

- ✓ Offers the pleasure and health benefits of gardening to those who don't have outdoor space
- ✓ Offers the option of growing tropical plants which are not suitable to our climate year round
- ✓ Herbs can be grown to use in cooking year round
- ✓ Planters can be used to complement and enhance our interior decor

# Esthetics of Indoor Plants



# Aesthetics of Indoor Plants

- ✓ A wide variety of shapes and sizes
- ✓ Many have striking and colourful blooms
- ✓ Offers many ways to display them
- ✓ Keep us in touch with nature

# Sizes and Shapes

- ✓ Small and compact
- ✓ Tall and imposing
- ✓ Suitable for hanging





# Beautiful Blooms

- ✓ Orchids
- ✓ African violets
- ✓ Anthuriums
- ✓ Cyclamen



# Ways to display plants

- ✓ Depending upon the size and shape of your space:
  - ✓ Window displays
  - ✓ Accent plant and floor arrangement
  - ✓ Staged displays
  - ✓ Terrarium



# Growing conditions and Indoor Plant Care



# Growing Conditions Indoor Plant Care



## **Temperature**

Give them the WARMTH  
they need



## **Food**

Give them the FOOD  
they need



## **Grooming**

Give them the  
GROOMING they need



## **Light**

Give them the LIGHT  
they need



## **Water**

Give them the WATER  
they need



## **Humidity**

Give them the  
HUMIDITY they need



## **Space**

Give them the SPACE  
they need



# Light

- ✓ High, Medium, and Low
- ✓ Direct , Indirect



# Growing Under Lights

## Things to remember

- ✓ Light – 12 hours/day
  - ✓ LED lights are best
- ✓ Water
  - ✓ not too much!
- ✓ Fertilizer
  - ✓ just a little
- ✓ Air movement
  - ✓ use a fan





# Water

❖ Over

❖ Under



# Humidity





# Temperature



# Space



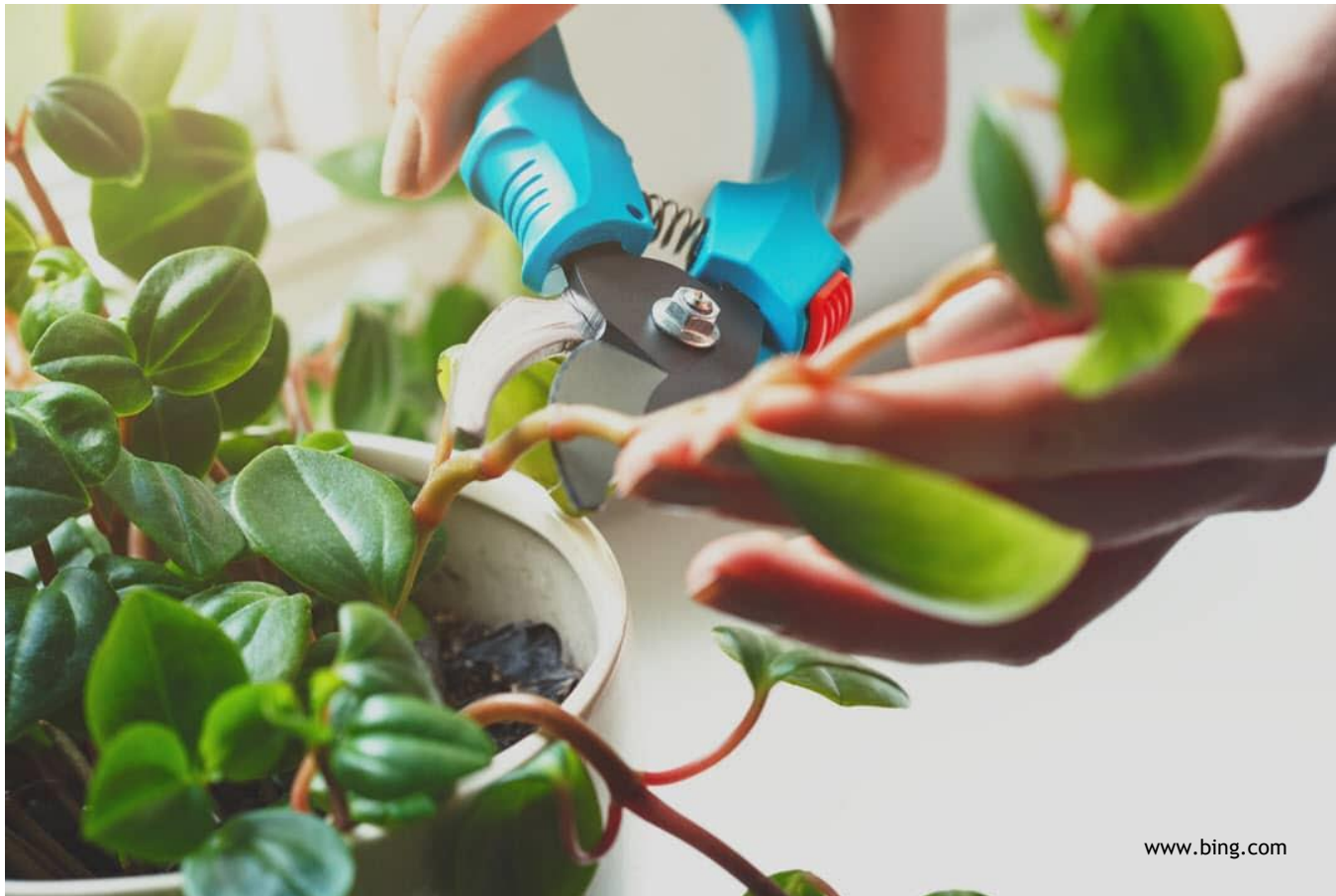
# Grooming Your Indoor Plants

✓ Cleaning

✓ Training

✓ Polishing

✓ Pruning



# Feeding your indoor plants



Nitrogen

Phosphorous

Potassium



# How to choose the right indoor plants



# How to choose the right plant



Ask yourself the following questions:

- ✓ Do you want the plant to be on display all year round
- ✓ How much time and skill do you have?
- ✓ How much do you want to spend?
- ✓ What size and shape plant do you want?
- ✓ What will the growing conditions be like?

# Challenges of Indoor Gardening



# Plant collapse

- ✓ The seven most common fatal factors are:
  - ✓ Soil dryness
  - ✓ Overwatering
  - ✓ Cold nights
  - ✓ Strong sunshine
  - ✓ Hot, dry air
  - ✓ Draughts
  - ✓ No light



landscape-solutions.net



# Pests

- ✓ Less common than outdoors
- ✓ Can cause serious damage
- ✓ Treat once identified
- ✓ Some common pests include;
  - ✓ Aphids
  - ✓ Spider mites
  - ✓ Fungus gnats



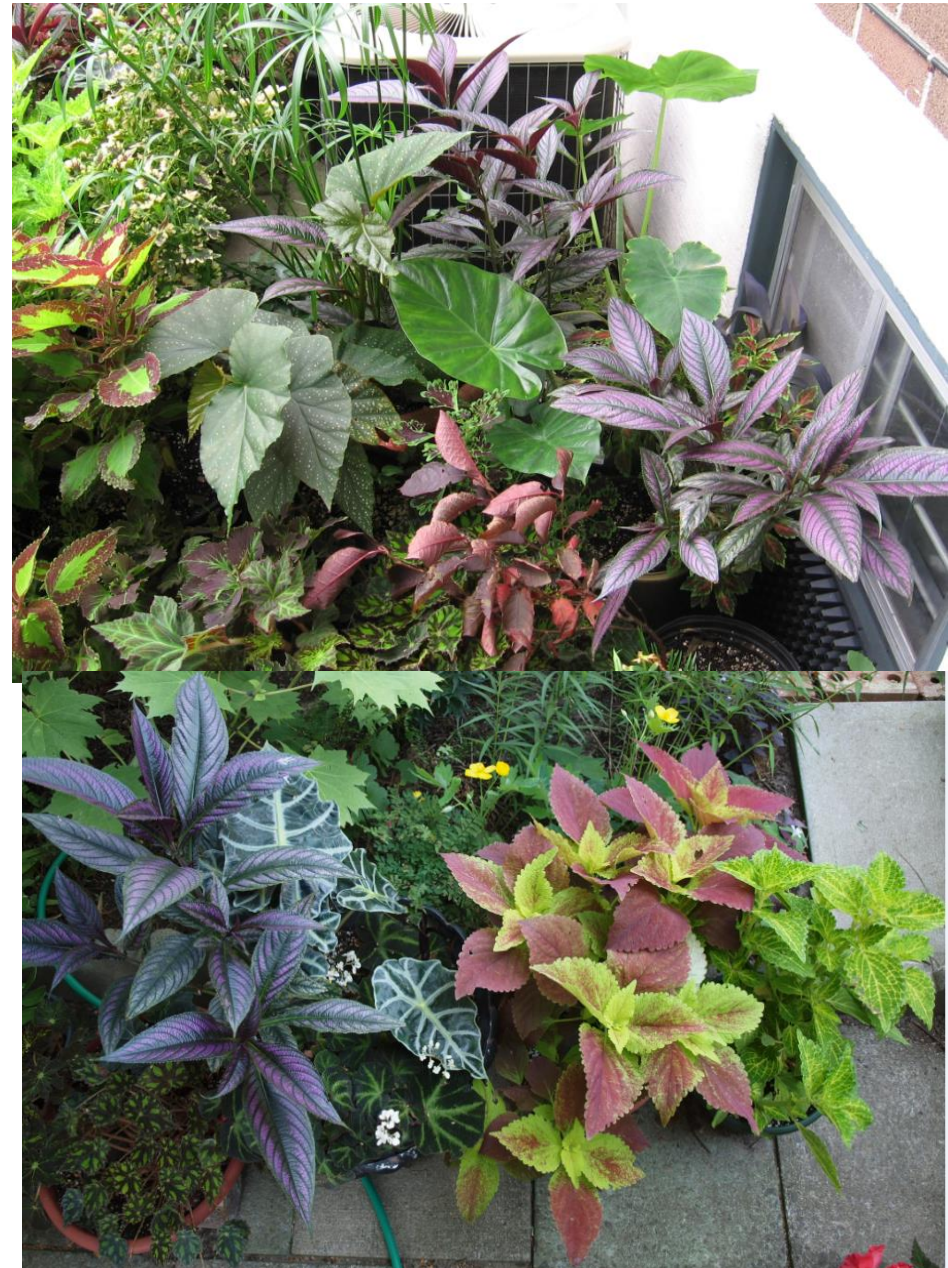
# Disease

- ✓ A sign of poor growing conditions
- ✓ Take immediate action
  - ✓ cut out the affected area
  - ✓ use fungicide if recommended
  - ✓ correct the cultural practice
- ✓ Some common disease include;
  - ✓ Damping off
  - ✓ Root Rot
  - ✓ Crown & Stem Rot



# Bring plants in from the outdoors

- ✓ Houseplants benefit from a summer vacation in a shady spot
- ✓ When they are ready to come in apply a soil drench with insecticidal soap, and spray the leaves thoroughly
- ✓ Quarantine the plants for a few weeks
- ✓ Also apply the quarantine status to newly-bought plants





# Predators

- ✓ Keep plants out of reach of cats and dogs
- ✓ Cats regard some leaves as a form of grass, which is often eaten.
- ✓ Dogs may dig in larger pots



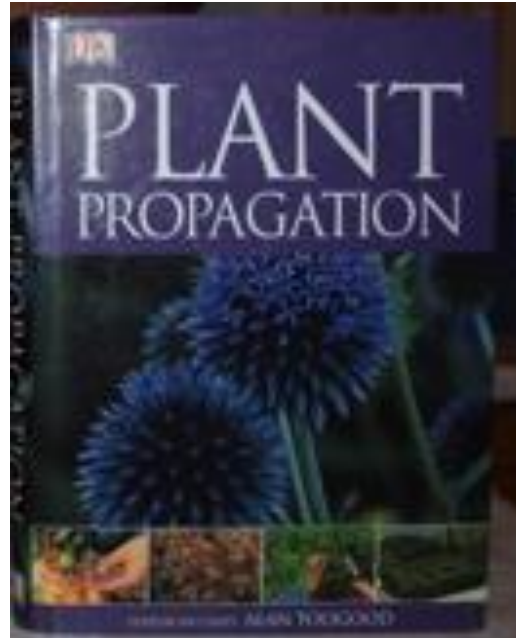


Increasing your stock



# Increasing your stock - Methods

- ✓ Cuttings
- ✓ Offsets
- ✓ Plantlets
- ✓ Layering
- ✓ Air Layering
- ✓ Division
- ✓ Seeds

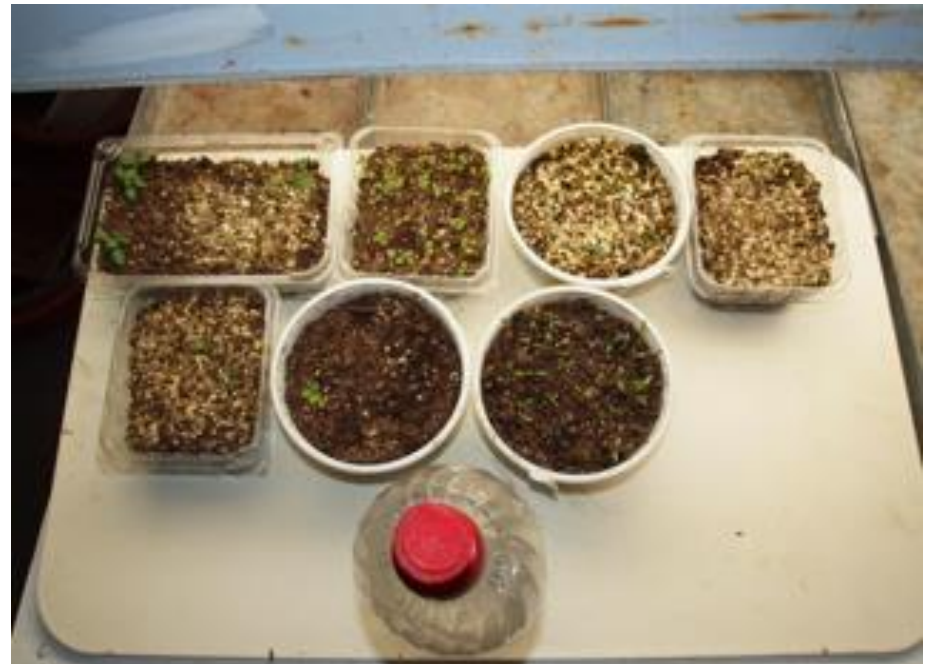


# Things to Obtain

- ✓ Potting Mix
- ✓ Containers
- ✓ Nutrients
- ✓ Natural Pesticides



www.Saferbrand.com





# Cuttings

- ✓ Cuttings can be taken any time
- ✓ Requirements differ from plant to plant
  - ✓ Place into water or into potting medium?
  - ✓ Consult a good source.
- ✓ Best length = about 6"
- ✓ Remove the leaves from the lower half of each stem
- ✓ If bringing in from outside, submerge cuttings in a pail of soapy water to remove eggs/insects





# Cuttings

- ✓ If in water, allow root system to develop
- ✓ If into medium, wound the bottom 1" of one side of the stem, dip into rooting powder and push into pot
- ✓ Try to prevent water loss



# Leaf cuttings

- ✓ This can be done for most succulents & African violets
- ✓ Succulents: take a leaf, let it callus overnight, and place on the surface of a small pot
- ✓ African Violets: Take a leaf with about 1" of stem and insert the stem into moist potting medium at a 45-degree angle





# Offsets

- ✓ Some plants produce baby plants or bulbs from the base
- ✓ This is *Aloe* 'Doran Black'.



- ✓ Gently separate the offset from the main plant – a sharp knife may be required
- ✓ The offset must have enough roots to be able to support itself

# Root Nodules

- ✓ Plants in the Taro family produce nodules on the ends of some of the roots
- ✓ Look for the nodules in the potting medium when you repot the plant
- ✓ Plant the nodules pointy side down just under the surface in a new pot

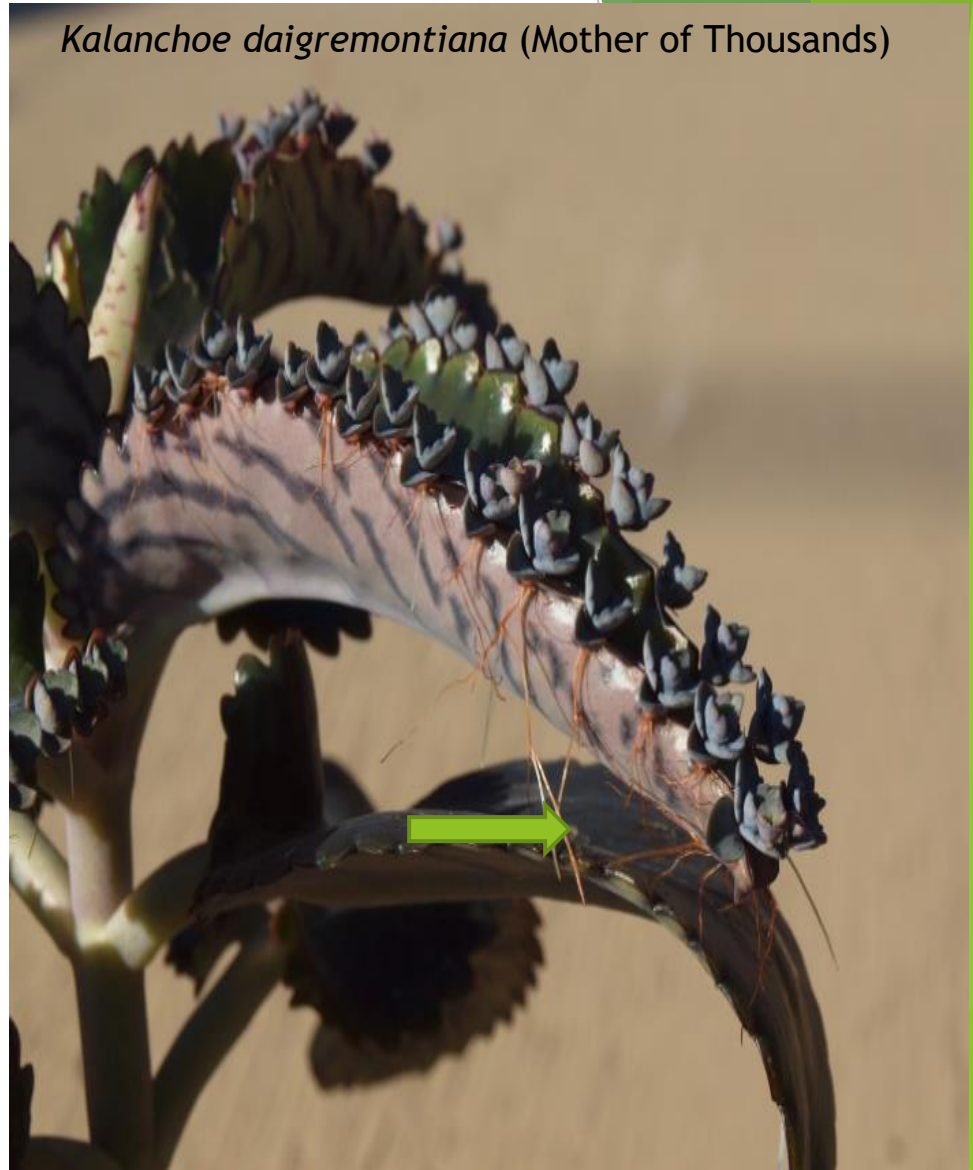




# Plantlets

- ✓ Mother of thousands babies form in notches on the edges of the leaves
- ✓ Plantlets detach very easily – note the root hairs
- ✓ Place plantlet on the surface of moist potting medium

*Kalanchoe daigremontiana* (Mother of Thousands)



# Plantlets

- ✓ Look for root bulges on the bottom of the 'spiderette'
- ✓ plantlets can be grown on in two ways...



- ✓ Cut the 'umbilical cord' and place the baby in water – wait until roots form and plant
- ✓ Small and medium-sized plantlets grow best

# Layering

- ✓ The second method is propagating spider plants is by layering
- ✓ Peg the baby plant down into a new pot and wait until new roots grow
- ✓ Do not cut the runner until the baby is self-supporting



*Episcia lilacina* var.





# Air-Layering

- ✓ Done with woody plants
- ✓ Wound the plant and surround it with sphagnum peat moss wrapped in plastic
- ✓ Keep the moss moist and wait until you can see roots
- ✓ Cut off the top portion of the plant and pot up in a new container





# Divisions

- ✓ Divided when they become too large for the pot
- ✓ Cut the stem and gently pull apart the fibrous roots
- ✓ Leaves are delicate, so take care when repotting



Foliage Begonia



# Divisions

- ✓ Mother-in-Law's Tongue (*Sansevieria trifasciata*)
- ✓ Knock the potting medium off the roots
- ✓ Cut at obvious break-points. With a sharp pruning knife
- ✓ Note that roots are very shallow
- ✓ May also be propagated by leaf cuttings in water



# Indoor Plants





# Indoor Plants

- ✓ African Violets - *Saintpaulia spp*
- ✓ Aloe Vera - *Aloe baradensis*
- ✓ Christmas Cactus - *Schlumbergera russelliana*
- ✓ Herbs
- ✓ Jade Plant - *Crassula ovata*
- ✓ Money Plant - *Pilea peperomioides*
- ✓ Monstera - *Monstera deliciosa*
- ✓ Orchids (Anthuriums, and Bromeliads)
- ✓ Parlour Palm - *Chamaedorea elegans*
- ✓ Poinsettia - *Euphorbia pulcherrima*
- ✓ Pothos - *Epipremnum aureum*
- ✓ Peace Lily - *Spathiphyllum wallisii*
- ✓ Rubber Plant - *Ficus elastica*
- ✓ Snake Plant - *Dracaena trifasciata*
- ✓ Spider Plant - *Chlorophytum comosum*
- ✓ Succulents, Cacti



# African Violets – *Saintpaulia* spp



# Aloe Vera - *Aloe barbadensis*



[www.goodhousekeeping.com](http://www.goodhousekeeping.com)





# Christmas Cactus - *Schlumbergera russelliana*





# Herbs





# Jade Plant - *Crassula ovata*



# Money Plant - *Pilea peperomioides*

[www.growurbam.uk](http://www.growurbam.uk)



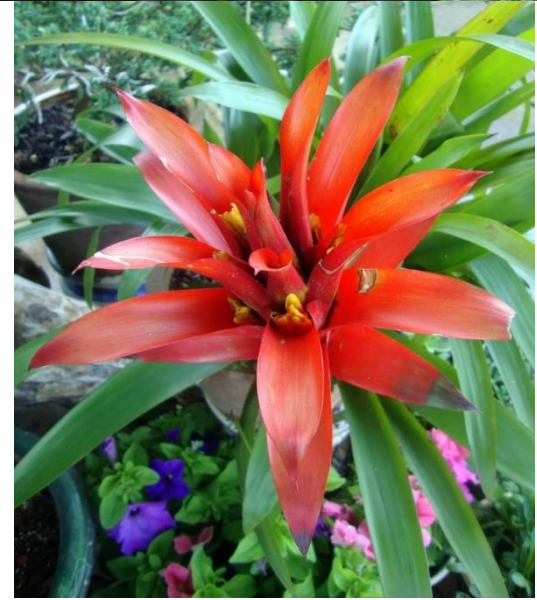
# Monstera - *Monstera deliciosa*



[www.nature-and-garden.com](http://www.nature-and-garden.com)



# Orchids, Anthuriums, and Bromeliads



# Parlour Palm - *Chamaedorea elegans*





# Poinsettia - *Euphorbia pulcherrima*





# Pothos - *Epipremnum aureum*



[https://en.wikipedia.org/wiki/Epipremnum\\_aureum](https://en.wikipedia.org/wiki/Epipremnum_aureum)

# Peace Lily - *Spathiphyllum wallisii*



# Snake Plant - *Dracaena trifasciata*





# Rubber Plant - *Ficus elastica*



# Spider Plant - *Chlorophytum comosum*





# Succulents, Cacti



Walmart.com



Pinterest.com



www.succulents-australia-sales.com



Wrap Up



# References

- ✓ Etobicoke Master Gardeners [www.etobicokemastergardenres.ca](http://www.etobicokemastergardenres.ca)
- ✓ Master Gardeners of Ontario [www.mgoi.ca](http://www.mgoi.ca)
- ✓ The House Plant Expert, Dr. D.G. Hessayon
- ✓ Making Things Grow – A Practical Guide for the Indoor Gardener, Thalasso Cruso, Alfred A. Knopf, New York, 1973
- ✓ [laidbackgardener.blog](http://laidbackgardener.blog) ( late Larry Hodgson)
- ✓ [gardenmyths.com](http://gardenmyths.com) (Robert Pavlis)
- ✓ University of Minnesota Extension
  - ✓ [extension.umn.edu/find-plants/houseplants](http://extension.umn.edu/find-plants/houseplants)
- ✓ North Carolina Extension Gardener Plant Toolbox
  - ✓ [plants.ces.ncsu.edu/plants/monstera-deliciosa/](http://plants.ces.ncsu.edu/plants/monstera-deliciosa/)
- ✓ [plantophiles.com/category/plants/](http://plantophiles.com/category/plants/)
- ✓ [.aspca.org/pet-care/animal-poison-control/toxic-and-non-toxic-plants](http://.aspca.org/pet-care/animal-poison-control/toxic-and-non-toxic-plants)

# You can find a copy of the presentation



**Etobicoke Master Gardeners**

[ABOUT US](#)

[CONTACT US](#)

[CALENDAR OF EVENTS](#)

1

[COMMUNITY ACTIVITIES](#)

3

[WORKSHOP MATERIALS](#)

2

[HUMBER ARBORETUM](#) ►

[EMG PLANT SALE](#)

[LINKS & RESOURCES](#)

[EVENTS/WORKSHOPS](#)

## Workshop Materials

***Native Plant Gardening*** (April 23, 2022)



**native\_plant\_gardening\_april\_23\_2022.pdf**  
**Download File**

EMG Website > Community Activities > Resources

Etobicoke Master Gardeners

[www.etobicokemastergardeners.ca](http://www.etobicokemastergardeners.ca)





**Etobicoke Master  
Gardeners'  
Annual 2024  
SPRING PLANT SALE**

**Saturday, May 25  
8:30 am-12:30 pm  
6 Kingsway Crescent**

Advice Clinic, Perennials, Shrubs, Herbs & Tomatoes & more!



Native plants for native pollinators

[etobickemastergardeners.ca](http://etobickemastergardeners.ca)

# Poll Question

How did you hear about the event?

1. Humber Arboretum
2. Etobicoke Master Gardeners
3. Facebook
4. Twitter
5. Etobicoke Guardian
6. Toronto Gardeners
7. Lakeshore Environmental Gardening Society
8. Etobicoke Horticultural Society
9. Other



**Etotobicoke Master Gardeners**



**HUMBER  
ARBORETUM**

# **2023 Eco-Garden Community Workshop Series**

**Saturdays 10:00 AM - Noon**

## **Virtual Sessions**

February 2

March 4: Growing

April 15: Native

April 29: Invasive Plants, C

June 10: Pollinator Friend Gardeni

October 14: Pruning

November 18: Indoor Plants

**Stay tuned for the  
2024 sessions**

## **at the Arboretum**

ed:

denification tour

ay and Look at

Invasive Plant Control, and

Alternatives To

October 21: Pruning Workshop

**Free, but space is limited & registration is required:**

**[Humber.ca/arboretum/emg](https://humber.ca/arboretum/emg)**





# **Etobicoke Master Gardeners**

**Thank you!**



**Questions**

