

# *Dream – Design – Dig!*

## Planning a successful garden

Prepared by:  
Etobicoke Master Gardeners



Etobicoke Master Gardeners  
[www.etobिकोकemastergardeners.ca](http://www.etobिकोकemastergardeners.ca)

Presented at:  
Humber Arboretum



Humber Arboretum  
[www.humberarboretum.on.ca](http://www.humberarboretum.on.ca)

# Master Gardeners of Ontario



**Etobicoke Master Gardeners**

[ABOUT US](#)

[CONTACT US](#)

[CALENDAR OF EVENTS](#)

[COMMUNITY ACTIVITIES](#)

## Etobicoke Master Gardeners

**Etobicoke Master Gardeners (EMG)** was formed in January 2005 and is meant to cover the west side of Toronto and take in those people who want to study for the Master Gardener (MG) designation.

Meetings are held at the [Montgomery Inn](#) on the fourth Wednesday of most months from 7 to 10 p.m.

EMG comprises 36 active members: 26 Master Gardeners (MG) and 10 Master Gardeners in Training (MGIT) who are in the process of studying for Master Gardener Certification. We welcome inquiries from enthusiastic and interested individuals wishing to learn more about joining our



# Humber Arboretum



A partnership of:



About

Learn

Explore

Weddings & Rentals

Events

Contact



# Session Topics

## **Dream**

- ✓ Beyond Gardening
- ✓ What do you want from your garden?
- ✓ What's your garden Style ?
- ✓ Colour by Design

## **Design**

- ✓ Evaluate the Site
- ✓ Garden Features
- ✓ Selecting Plants
- ✓ What's your budget?
- ✓ Putting it down on paper

## **Dig**

- ✓ Let's Dig - Time to install your garden!
- ✓ Looking after the Landscape





**Dream!**

# Beyond Gardening

- ✓ Increase & maintain the *value* of your property
- ✓ Improved '*curb appeal*' & personal *expression*
- ✓ Beautification & preservation of the *environment*
- ✓ Maximize the **functionality** of your surroundings
- ✓ Enhanced *privacy*
- ✓ Creation of a *backyard habitat*
- ✓ *Reduced energy costs*
- ✓ *Protection* of private areas from the elements
- ✓ Personal *health & welfare* development



**Why Plan your  
garden!**

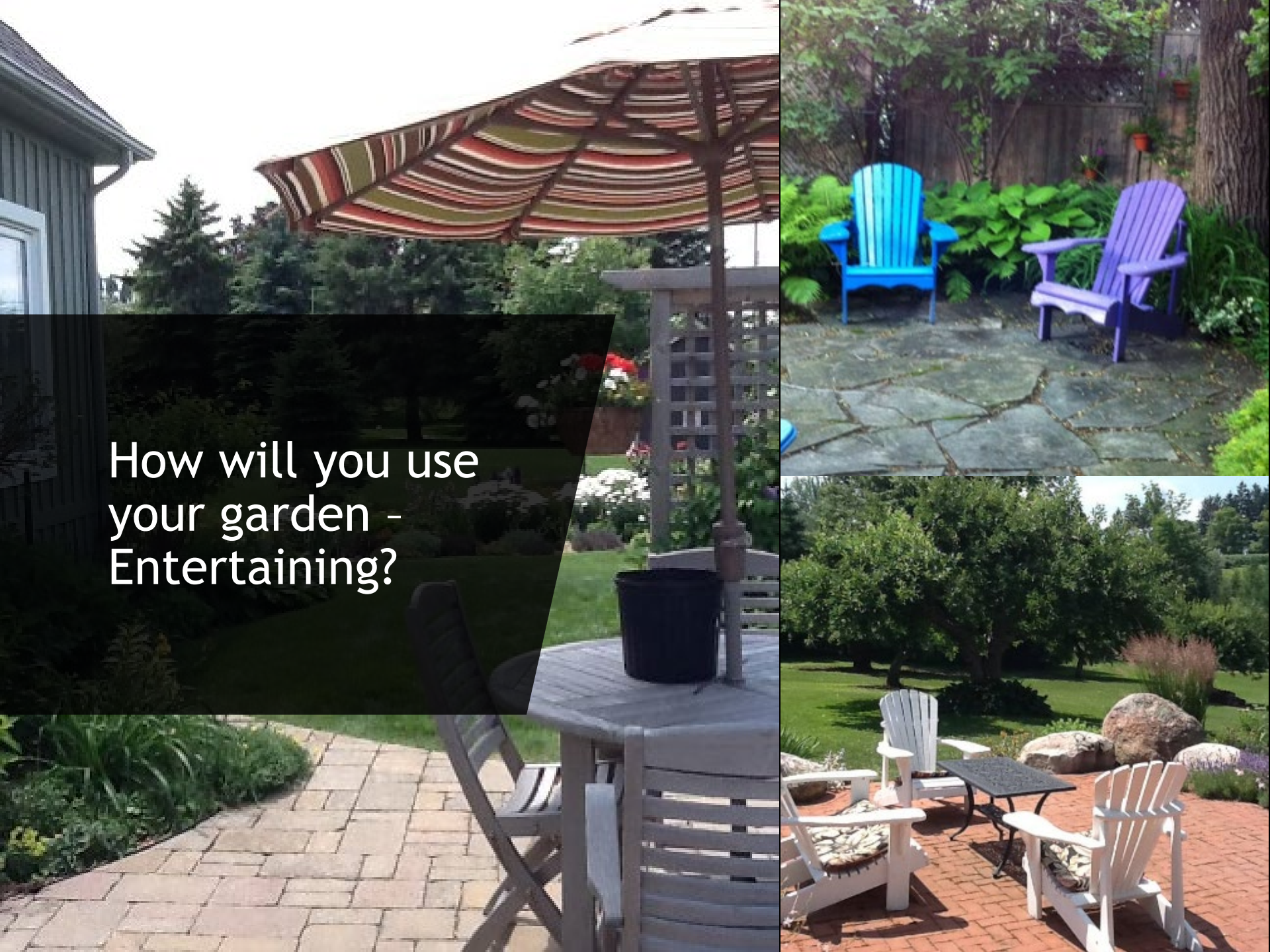


# What do you want from your garden?

- ✓ Know how you are going to use the garden
- ✓ A garden can't have everything.....
- ✓ Focus on the things that are most important to you
- ✓ Be realistic on how you will use and care for your garden
- ✓ Forms the foundation for all of your choices about plants and structural elements







How will you use  
your garden -  
Entertaining?

How will you use  
your garden –

PRIVACY?

How will you  
use your  
garden -

ENTRANCE?



# How will you use your garden – PLAY AREA?





# How will you use your garden – FRONT YARD?





How will you use  
your garden?

Etobicoke Master Gardeners

[www.etobickemastergardeners.ca](http://www.etobickemastergardeners.ca)





# What's your garden Style ?

## Container Garden





# What's your garden Style ?



## Contemporary Garden



# What's your garden Style ?



[www.homengardeningtips.com](http://www.homengardeningtips.com)

## Formal Garden

Etobicoke Master Gardeners

[www.etobicokemastergardeners.ca](http://www.etobicokemastergardeners.ca)

# What's your garden Style ?

Water Garden



# What's your garden Style ?

Informal Garden





# What's your garden Style ?



## Japanese Garden



# What's your garden Style ?



## Winter Garden

# What's your garden Style ?

Children's Garden





# What's your garden Style ?



## Vegetable Garden

Etobicoke Master Gardeners

[www.etobicokemastergardeners.ca](http://www.etobicokemastergardeners.ca)



# What's your garden Style ?

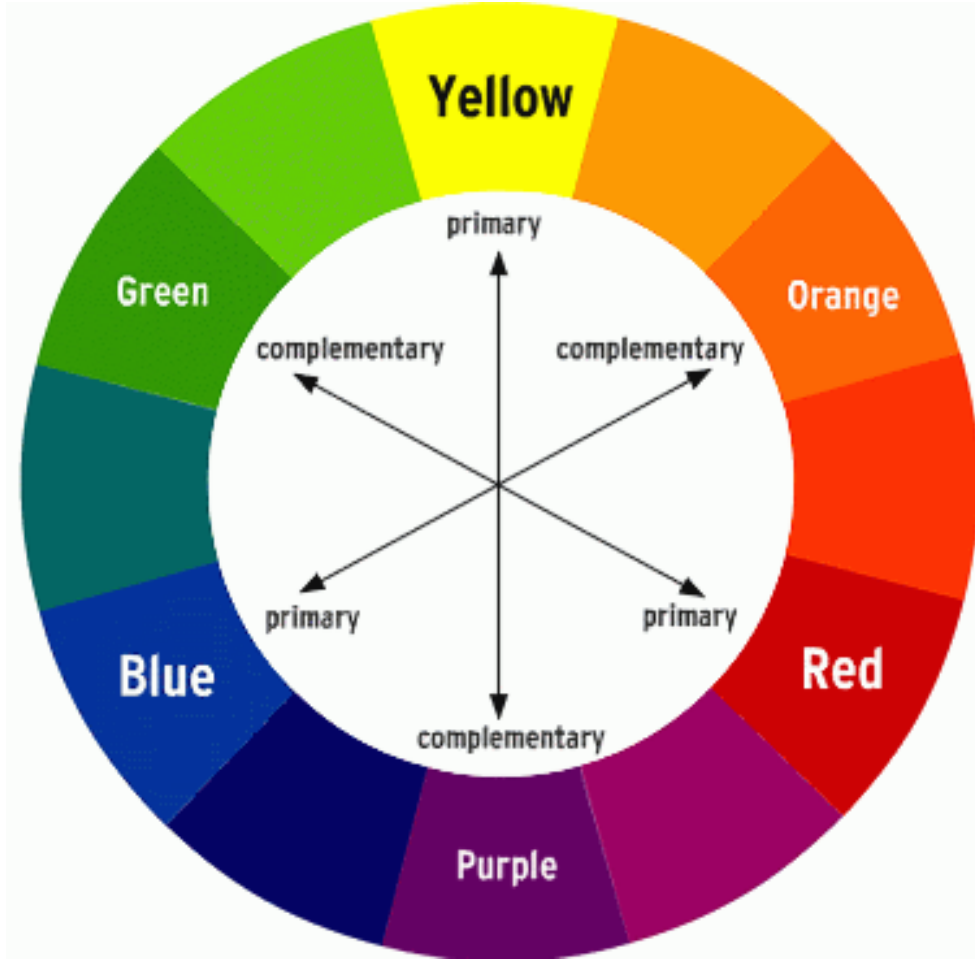


## Rock Garden

Etobicoke Master Gardeners

[www.etobicokemastergardeners.ca](http://www.etobicokemastergardeners.ca)

# Colour by Design





# Colour Effects





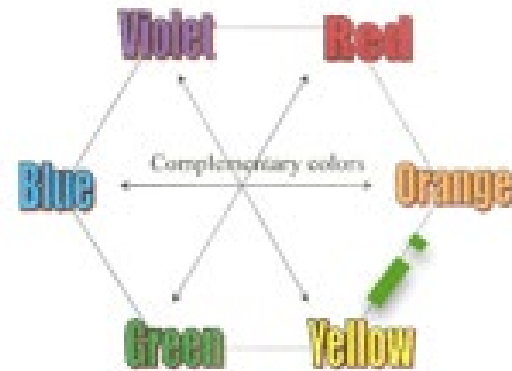
# Colours of the Garden!



## Monochromatic Schema



# Colours of the Garden!



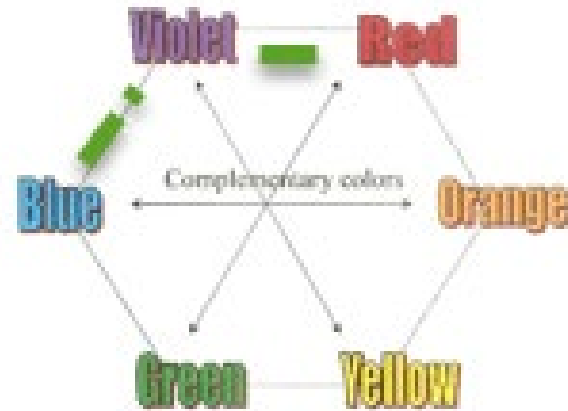
Analogous  
Scheme



# Colours of the Garden!



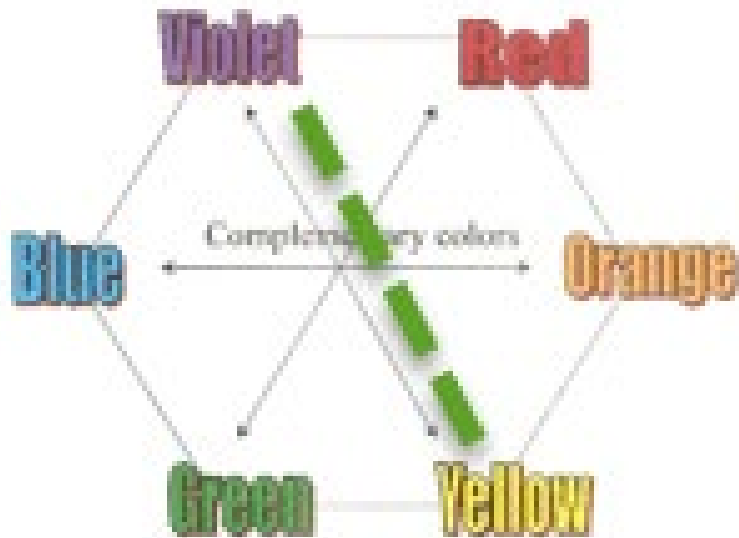
<http://www.thomashoblyn.com>



Contrast:  
Triad of three  
hues



# Colours of the Garden!



Complementary Scheme: two hues opposite each other



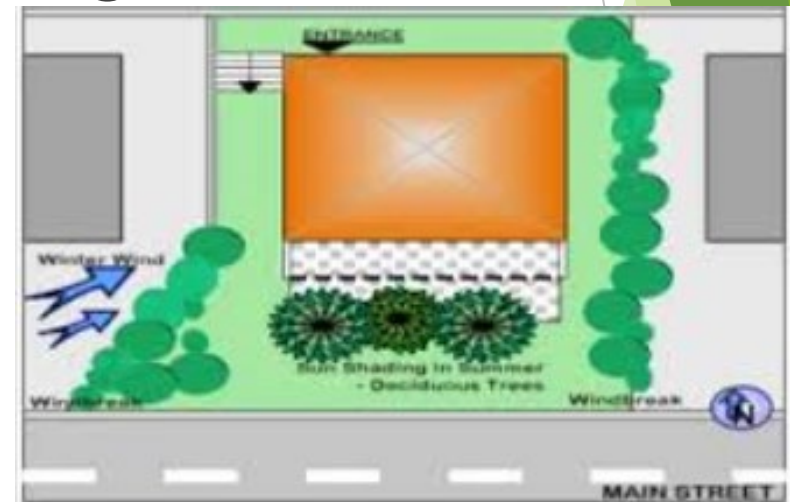
# Design!





# Evaluate the Site

- ✓ What are your site conditions?
- ✓ House aspects – North , South, East, West
- ✓ Observe the microclimates in your garden
- ✓ Note grade level or sloping
- ✓ Observe drainage
- ✓ Effects of hardscaping
- ✓ Borrow the scenery



# Determine your Canadian Plant Hardiness Zone

✓ Visit <http://www.planthardiness.gc.ca/> to determine your hardiness zone





# How does the wind blow?

- ✓ Don't overlook wind patterns!
- ✓ Observe & record wind patterns
- ✓ Wind affects plants and your plant selection
- ✓ Windy sites tend to be hot and dry
- ✓ Eastern elevation is the most protected
- ✓ South-west and West elevations are the most exposed.





# Light

- ✓ Observe your property carefully; each garden has its own unique light patterns.
- ✓ Look for the sun patterns in your garden
- ✓ Light classification – hours of sun per day





# Water



Conditions to consider:

- ✓ Type of garden
- ✓ Access to water
- ✓ Irrigation method
- ✓ Garden size
- ✓ Budget
- ✓ Environmental concerns
- ✓ New gardens require frequent watering

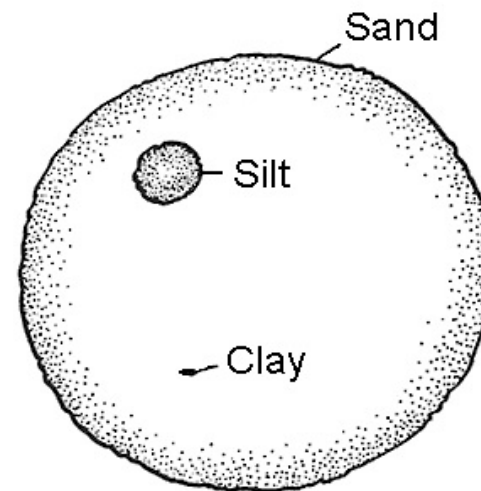


# Soil – What is it made of?

- ✓ Weathered rock material broken down over many years
- ✓ Sand, silt and clay
- ✓ Micro-organisms
- ✓ Organic matter
- ✓ Water and Air



<http://foodstorageandbeyond.com/wp-content/uploads/2011/03/types-of-soil.jpg>

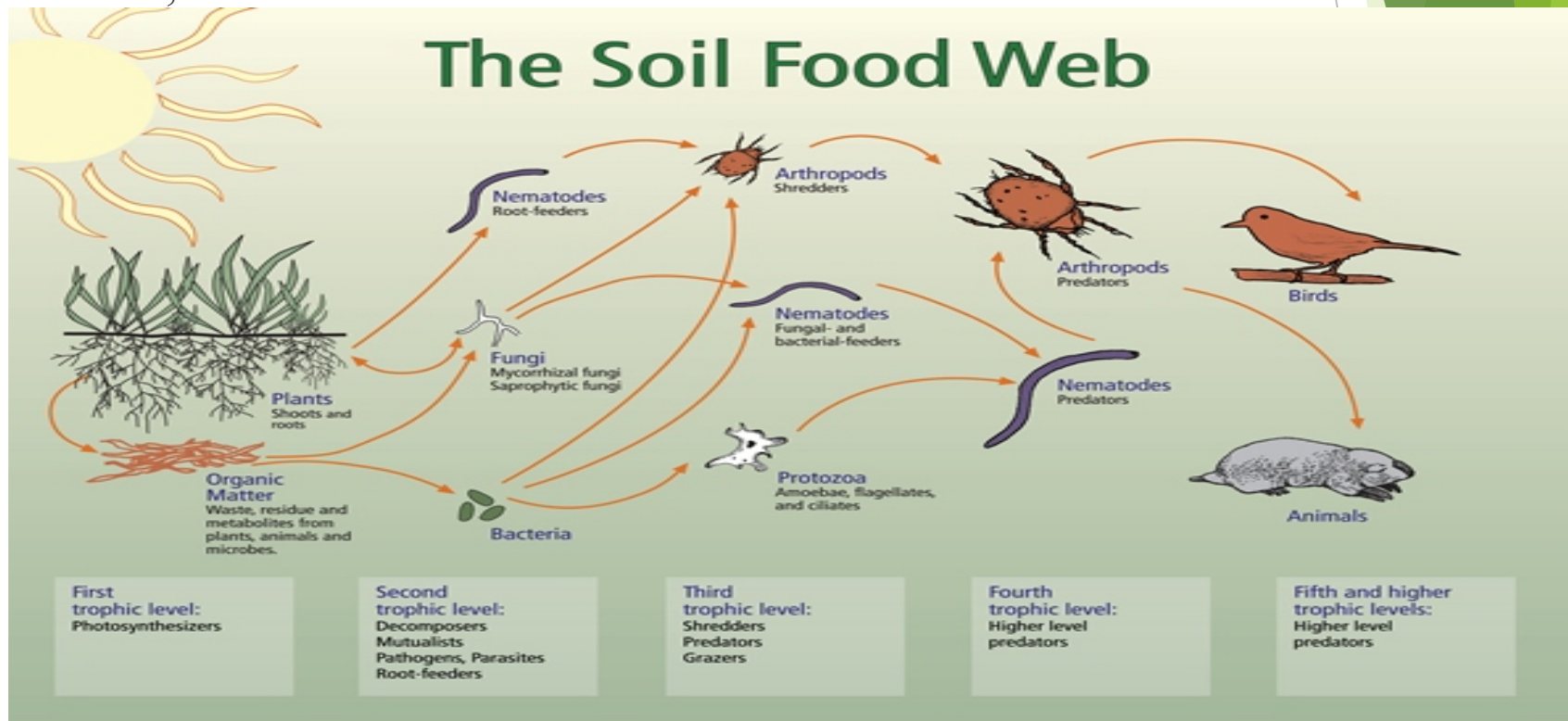


<http://pnwmg.org/images/soilparticlesize.gif>



# What does soil provide to plants?

- ✓ Temperature control during very hot/cold periods
- ✓ Oxygen that roots need to breathe
- ✓ Anchoring support to stay upright
- ✓ Water that roots need to drink
- ✓ Food, food and more food!!!



# Composting: What are the benefits?



- ✓ Reusing and recycling
- ✓ It's natural – occurs in nature!
- ✓ Helps grow strong healthy plants
- ✓ Good for soil health and structure
- ✓ Adds micro-organisms to root zone
- ✓ Reduces needs for synthetic fertilizers
- ✓ Improves water drainage in clay soils
- ✓ Improves water retention in sandy soils
- ✓ Cleans up contaminated soil (remediation)



# Work with Mother Nature!

- ✓ Take advantage of site conditions
- ✓ At a DRY site, plant drought tolerant grasses and perennials
- ✓ Damp, boggy conditions call for wetland plants



[www.slowaterwiselandscaping.com](http://www.slowaterwiselandscaping.com)



[www.mahergreenwaldgardens.com](http://www.mahergreenwaldgardens.com)

# Garden Features, the *Hardscaping*







# Selecting Plants, the *Softscape*

- ✓ Choose the plants *before* you go to the nursery
- ✓ Base your selections on:
  - ✓ Hardiness
  - ✓ Maintenance level
  - ✓ Site conditions
  - ✓ Size
  - ✓ Garden style
  - ✓ Colour scheme
  - ✓ Multiple seasons of interest

# Order of selection

- ✓ Trees
- ✓ Vines
- ✓ Shrubs
- ✓ Tall perennials
- ✓ Medium perennials
- ✓ Ground covers
- ✓ Annuals





# Lighting

- ✓ Research carefully and develop a lighting plan at the beginning of the design process
- ✓ Accent exceptional features
- ✓ Provide functional lighting
- ✓ Balance the light in the space



Don't  
forget  
a  
Focal  
Point







# Learning How to Use Focal Points





What  
to Add  
for a  
Focal  
Point In  
The  
Garden

# What's your budget?

- ✓ Budget is an important part of planning
- ✓ Focus on the most important areas
- ✓ How much should I budget?
- ✓ Consider your return on investment
- ✓ Phase your installations & budget
- ✓ Your budget should consider your short and long term plan



# Prioritize

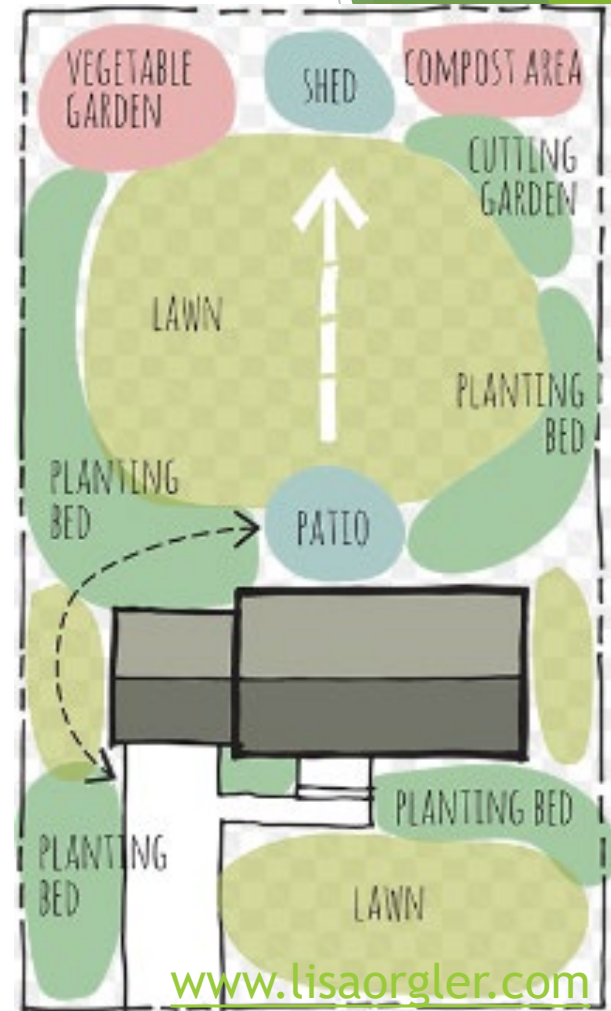
- ✓ Budget is an important part of planning
- ✓ Hardscaping Based on your review determine what you are changing
- ✓ Prioritize your
  - ✓ Hardscaping
  - ✓ Trees & shrubs
  - ✓ Plant materials
  - ✓ Vegetable patches
  - ✓ Container gardens





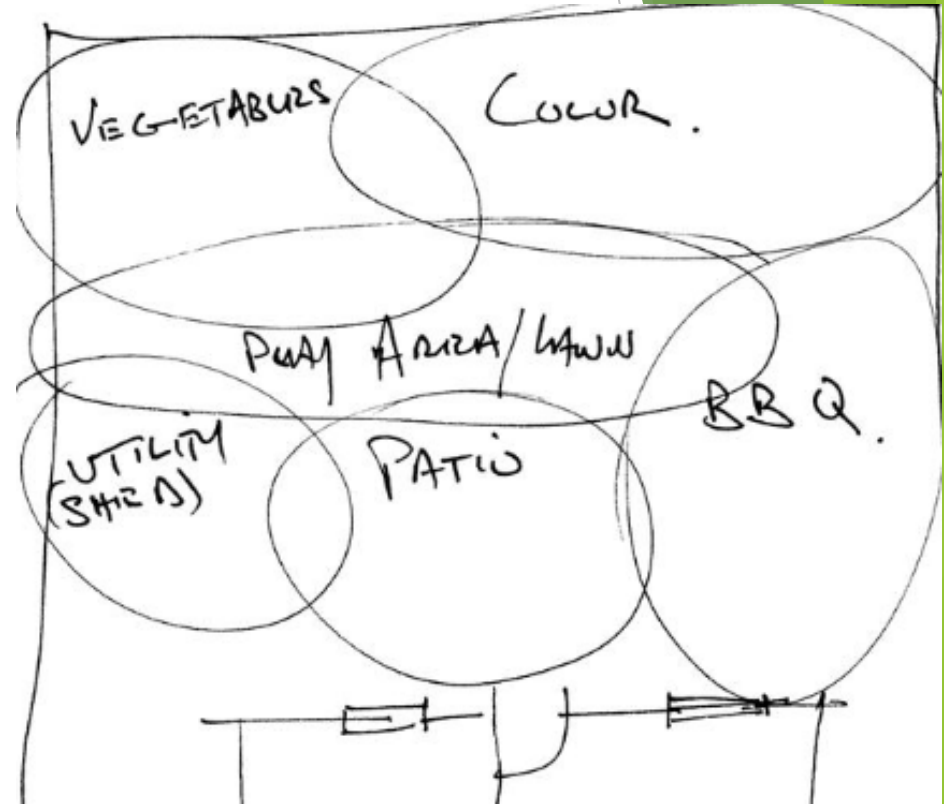
# Putting it down on paper!

- ✓ Layout the largest and most important areas first – work down to the smallest
  - ✓ Patio, deck, barbecue
  - ✓ Children's play area or other structure
  - ✓ Water feature
  - ✓ Shed
  - ✓ Trees
  - ✓ Planting beds
- ✓ Plan companion plantings, and crop rotation in your vegetable garden
- ✓ Plan for winter interest (structure, features)



# Bubble Diagram

- ✓ Used to define spaces within the landscape
- ✓ A series of circles or rounded shapes to show what the areas in the landscape will be used for
- ✓ May represent a turf area, shrub, boarder, perennial garden, etc.
- ✓ The bubbles must fill in ALL of the space



# Dig!



Etobicoke Master Gardeners





# Time to install your garden!



Etobicoke Master Gardeners

[www.etobickemastergardeners.ca](http://www.etobickemastergardeners.ca)



# Looking after the Landscape

## ✓ Routine Garden Tasks:

- ✓ Weed weekly
- ✓ Deadhead two to three times per week
- ✓ Monitor plant beds for dryness
- ✓ Water as needed
- ✓ Prune trees and shrubs
- ✓ Amend soil every two years

## ✓ Seasonal Tasks:

- ✓ Clean up plant and leaf debris
- ✓ Check water feature equipment
- ✓ Fertilize as needed
- ✓ Top up mulch
- ✓ Empty composter
- ✓ Plant
- ✓ Divide
- ✓ Prune
- ✓ Protect tender plants and shrubs



Time to ENJOY!







# Upcoming Workshop: We Want to Garden, but!

January 18, 2020  
at  
10:00 am - 12:00 noon

Etobicoke Master Gardeners

[www.etobicokemastergardeners.ca](http://www.etobicokemastergardeners.ca)

# **Etobicoke Master Gardeners & Humber Arboretum**

**Thank you!**

**Questions?**



Etobicoke Master Gardeners  
[www.etobicokemastergardeners.ca](http://www.etobicokemastergardeners.ca)



Humber Arboretum  
[www.humberarboretum.on.ca](http://www.humberarboretum.on.ca)